

LAND OFFICE INDUSTRIAL RETAIL INVESTMENTS

LITTLETON OFFICE BUILDING FOR LEASE

6901 S. Pierce St., Littleton, CO 80128



www.FullerRE.com

The Columbine Valley Office Building is a quality Southwest Metro Denver building that offers local and responsive ownership, monument signage, and access to walkable retail amenities.

[Click Here on PDF for Drone Video](#)



For Lease:	\$20.00/SF Full Service
Building:	50,403± SF
YOC:	1984
Parking Ratio:	3.5:1000

AVAILABLE SUITES			
Suite #	Size	Rate	Comments
100F	326 RSF	\$20.00	Executive Suite Single Room - \$545/mo.
220	1,017 RSF	\$20.00	Two window offices and one interior office. Subject to right of first refusal.
310	1,240 RSF	\$20.00	Four offices, reception, and storage.

Fuller Real Estate
(303) 534-4822

[Click for Brokerage Disclosure](#)

John Becker
(720) 287-5414 direct
(303) 888-7909 mobile
JBecker@FullerRE.com

Mike Haley
(720) 287-5408 direct
(720) 309-3413 mobile
MHaley@FullerRE.com

General Vicinity Map



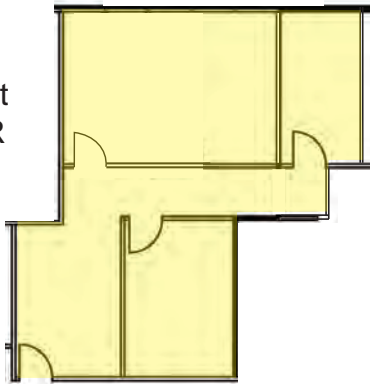
Executive Suites

Available: Suite 100F - 326 SF



Suite 220
1,017 SF

Subject
to RFR



Suite 310
1,240 SF

