

TWENTY MILE VILLAGE SPACE FOR LEASE

18671 E. Mainstreet, Parker, Colorado



www.FullerRE.com

[Click Here on PDF for Drone Video](#)



Aerial Photography by: www.AerialDroneClick.com

Current Availability:
Unit C - 1,600 SF

Offered at \$24.00/SF
Est. NNN's = \$9.00/SF

DEMOGRAPHICS <small>(CoStar 2024)</small>	1 Mile	3 Mile	5 Mile
	Population:	10,531	80,940
Median Age:	35.60	37.60	39.00
Median HH Income:	\$82,577	\$124,875	\$120,798
TRAFFIC:			
Mainstreet at Dransfeldt Rd.	18,014 vpd <small>(CoStar 2022)</small>		
Dransfeldt Rd. at Pony Express	13,412 vpd <small>(CoStar 2022)</small>		

This property is located on the northwest corner of Mainstreet and Dransfeldt and is approximately 1/4 mile west of Parker Road. It is across the parking lot from the new Parker Hotel and Restaurants. There are many apartment and condominium communities in the immediate vicinity. The shopping center is well maintained and has an appealing sense of arrival.

Fuller Real Estate
(303) 534-4822

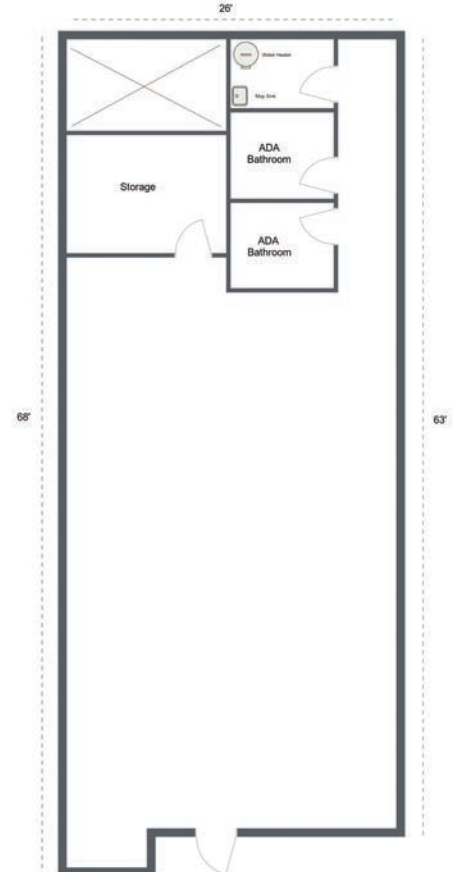
[Click for Brokerage Disclosure](#)

Andrew Dodgen
720.287.5412 direct
720.670.0377 mobile
ADodgen@FullerRE.com



Member:


 International Council of Shopping Centers



Floorplan provided as a visual reference only and may not be totally accurate.