

LAND OFFICE INDUSTRIAL RETAIL INVESTMENTS

Retail Space Available at Hillside Plaza

3890 Kipling St, Wheat Ridge, CO 80033



www.FullerRE.com

Click to view
Drone Video

Aerial Photography by:
www.AerialDroneClick.com



PROPERTY INFORMATION

Available:	2,500± SF Total - 100'x25' each Suite
Suite F:	1,250± SF - Former Spa
Bldg Size:	19,698± SF
Lot Size:	2.01± Acres
YOC:	1985 (Renovated in 2000)
Parking:	88 Spaces (4.5:1,000/SF)

PROPERTY SUMMARY

Great retail space at the corner of 39th Avenue and Kipling. The center has excellent access from I-70 and 6th Avenue and is only 38 minutes from DIA airport. There is ample parking with excellent visibility from Kipling. The center has good traffic from the mix of tenants including Domino's. Located directly beside the Everitt Middle school which generates additional traffic during the school year.

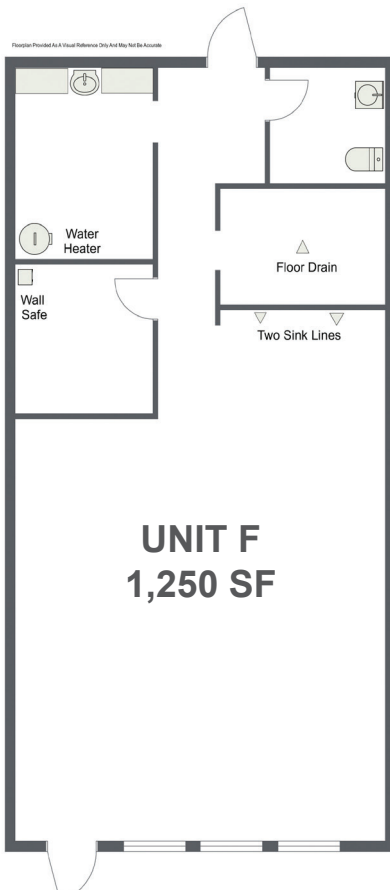
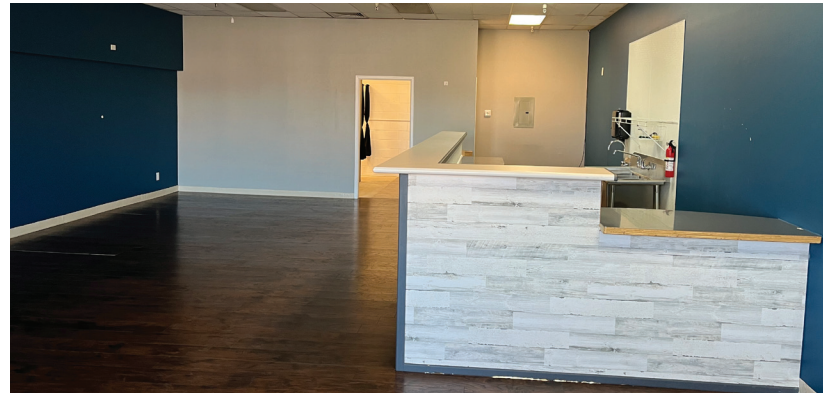
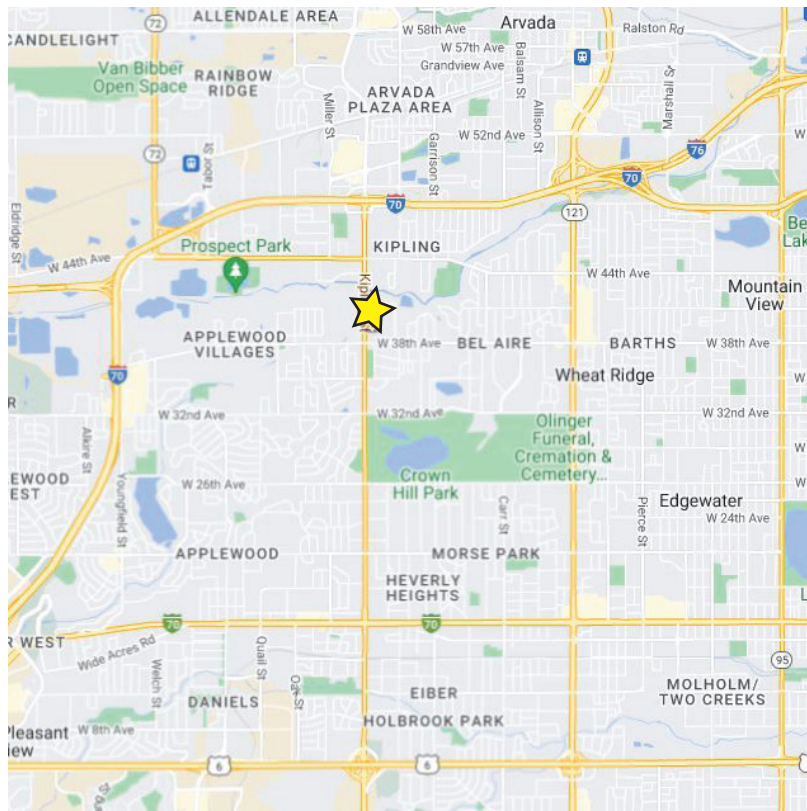
FOR LEASE:
\$2,200/month Modified Gross






Fuller Real Estate
(303) 534-4822

**Brokerage Disclosure
to Buyer**

Paul Roberts
(720) 306-6029 direct
(720) 260-7417 mobile
PRoberts@FullerRE.com

©2026 Fuller Real Estate. All Rights Reserved. Price, terms and availability subject to change without notice.



DEMOGRAPHICS	1 Mile	3 Miles	5 Miles
 Population	9,512	105,561	313,853
 Households	4,280	47,236	133,429
 Median HH Income	\$102,534	\$96,289	\$103,270
 Median Age	42.50	41.00	39.30
 Traffic	44,134 vpd - W 38th Ave @ Kipling St		

Source: CoStar 2024