

LAND OFFICE INDUSTRIAL RETAIL INVESTMENTS

Inverness Office Condo For Sale

88 Inverness Circle East., Bldg. F, Englewood, CO 80112



www.FullerRE.com



PROPERTY INFORMATION

Unit F-106: 1,231± Sq.Ft.

Ownership:

Single Owner

YOC: 2002

Construction:

Brick / Masonry

Property Taxes:

\$7,812.10 (2022)

NARRATIVE

Located in the prestigious Inverness Business Park of southeast Denver, this 1,231± SF office condo offers a prime and desirable business address. Situated in a multi-building office condominium complex known as the Office Court at Inverness, the condo offers 2 private offices, kitchenette, 2 open spaces, and an ADA approved private bathroom. The previous owner was a recording studio that installed fiber, Ethernet and Cat 6. The office affords good access to I-25 via Dry Creek Rd. There are numerous retail and restaurant establishments within minutes of the property, including the Park Meadows Mall. Walmart and Arapahoe Rd. are located approx. ½ mile to the north. Inverness has a monthly HOA fee of \$315.

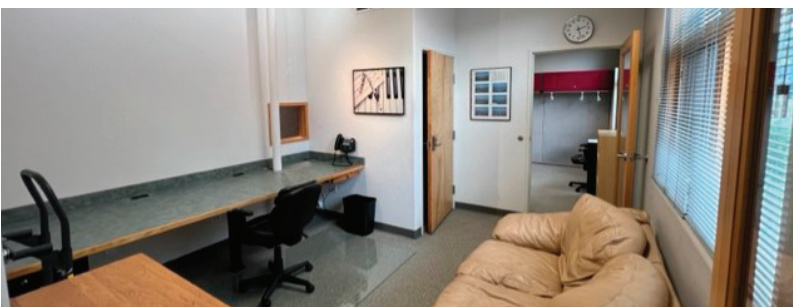
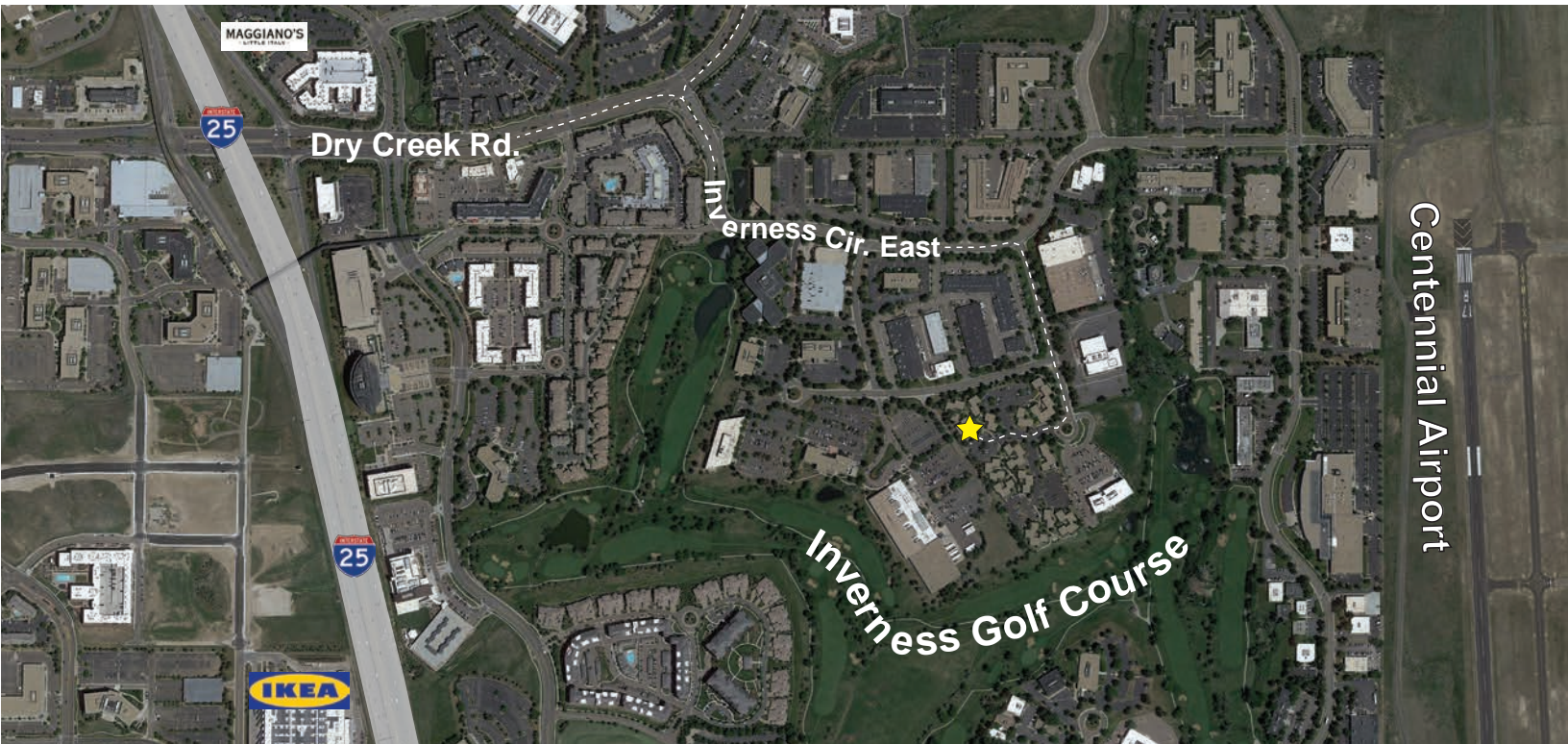
Fuller Real Estate
(303) 534-4822

[Click for
Brokerage
Disclosure](#)






Alex Scott
(720) 287-5417 direct
(972) 207-8877 mobile
AScott@FullerRE.com

Travis Wanger
(720) 974-2790 direct
(303) 888-1061 mobile
TWanger@FullerRE.com

©2023 Fuller Real Estate. All Rights Reserved. Price, terms and availability subject to change without notice.



DEMOGRAPHICS

	1 Mile	3 Miles	5 Miles
 Population	7,629	71,038	233,493
 Households	4,027	29,627	94,713
 Median HH Income	\$105,623	\$110,486	\$110,178
 Median Age	36.60	38.90	39.20
 Traffic	37,894 vpd - Dry Creek at Inverness		



Floorplan provided as a visual reference only and may not be accurate.