

Littleton Office Space For Lease

8500 W. Bowles Ave., Littleton, CO 80123



For Lease: \$19.50/SF FSG

CURRENT AVAILABILITY

Suite 200

Size: 2,857± SF
Layout: Nine (9) private offices, conf. room, galley and reception area.

Suite 205

Size: 1,105± SF
Layout: Two (2) private offices, open area for cubicles, reception area.

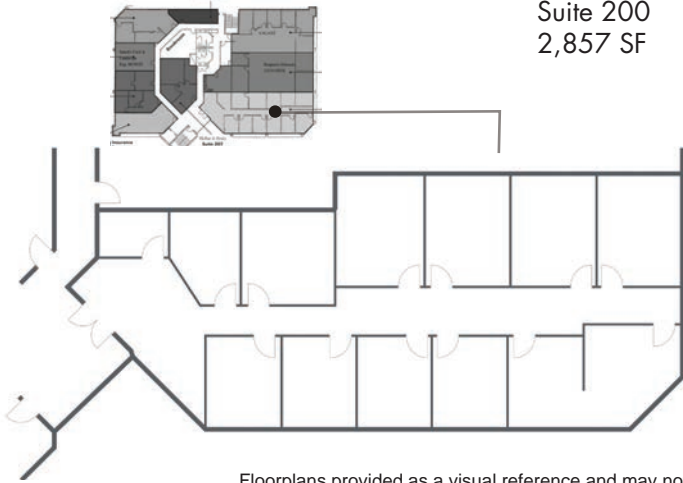
Suite 210

Size: 1,831± SF
Layout: Five (5) private offices, and a conf. room.

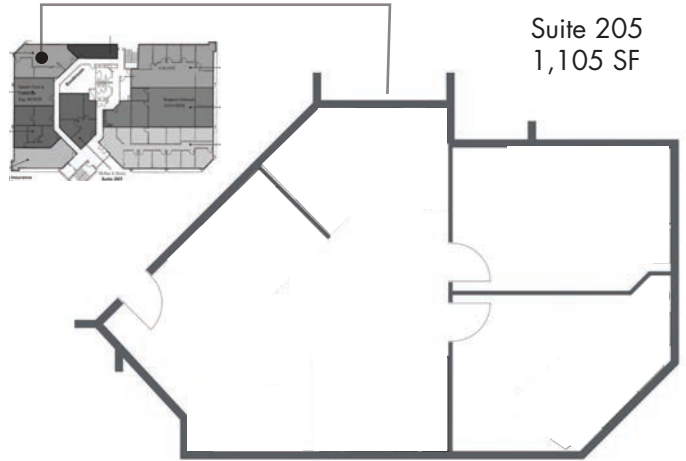
Suite 305

Size: 1,996± SF
Layout: Two (2) dental operatories with two perimeter offices.
Available: September 2025

Quality general office suites located in the southwest metro Denver submarket. Available suites are 2nd & 3rd floor units with nice views. Lots of nearby retail and restaurant amenities, with Southwest Plaza located across Bowles Ave. Wells Fargo Bank is on-site in the building lobby. Located just west of the Wadsworth Blvd./W. Bowles Ave. intersection. Parking - 4.2:1,000.



Suite 200
2,857 SF



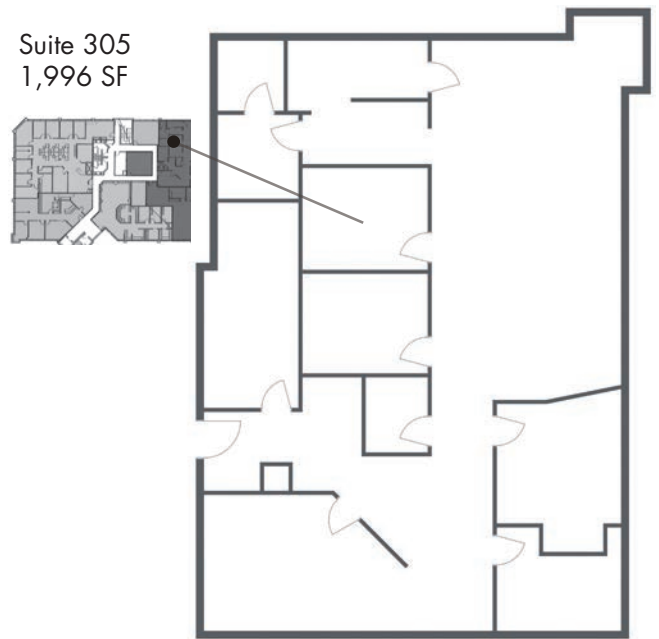
Suite 205
1,105 SF

Floorplans provided as a visual reference and may not be totally accurate.



Suite 210
1,831 SF

Suite 305
1,996 SF



View of Southwest Plaza across the street.

