

LAND OFFICE INDUSTRIAL RETAIL INVESTMENTS

LITTLETON OFFICE SPACE FOR LEASE

8500 W. Bowles Ave., Littleton, CO 80123



www.FullerRE.com



CURRENT AVAILABILITY

SUITE 200

Size:	2,857± SF
Layout:	Nine (9) private offices, conference room, galley and reception area.

SUITE 205

Size:	1,105± SF
Layout:	Two (2) private offices, open area for cubicles, reception area.

SUITE 210

Size:	1,831± SF
Layout:	Five (5) private offices, and a conference room.

LEASE RATE: \$19.50/SF FSG

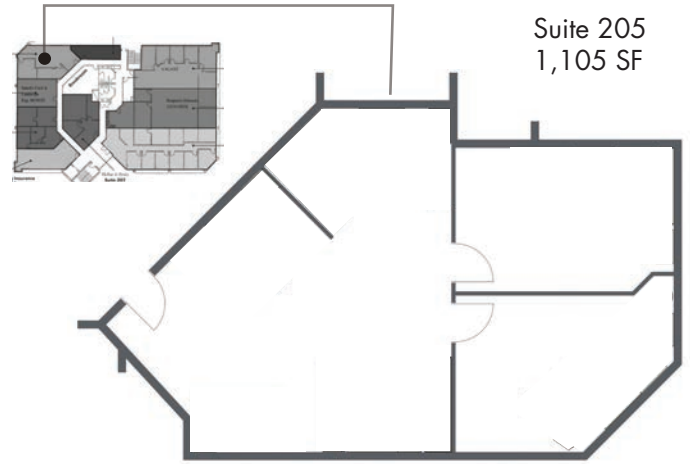
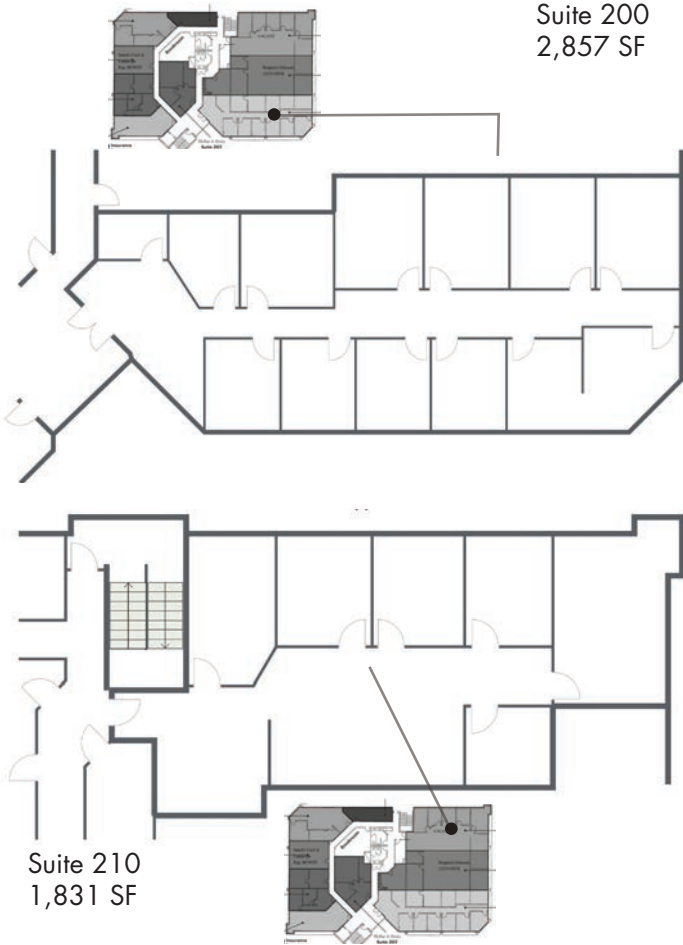
Quality general office suites located in the southwest metro Denver submarket. Available suites are 2nd & 3rd floor units with nice views. Lots of nearby retail and restaurant amenities, with Southwest Plaza located across Bowles Ave. Wells Fargo Bank is on-site in the building lobby. Located just west of the Wadsworth Blvd./W. Bowles Ave. intersection. Parking - 4.2:1,000.

Fuller Real Estate
(303) 534-4822

Brokerage
Disclosure

John Becker
(720) 287-5414 direct
(303) 888-7909 mobile
JBecker@FullerRE.com

Mike Haley
(720) 287-5408 direct
(720) 309-3413 mobile
MHaley@FullerRE.com



Floorplans provided as a visual reference and may not be accurate.

View of Southwest Plaza across the street.

