

LAND OFFICE INDUSTRIAL RETAIL INVESTMENTS

# LITTLETON OFFICE SPACE FOR LEASE

8500 W. Bowles Ave., Littleton, CO 80123



www.FullerRE.com



## CURRENT AVAILABILITY

### SUITE 200

<b>Size:</b>	2,857± SF
<b>Layout:</b>	Nine (9) private offices, conference room, galley and reception area.

### SUITE 205

<b>Size:</b>	1,105± SF
<b>Layout:</b>	Two (2) private offices, open area for cubicles, reception area.

### SUITE 207

<b>Size:</b>	993± SF
<b>Layout:</b>	Two (2) private offices, large reception & cubical area


### SUITE 301

<b>Size:</b>	1,408± SF
<b>Layout:</b>	Three (3) perimeter offices, reception, and galley

### SUITE 210

<b>Size:</b>	1,831± SF
<b>Layout:</b>	Five (5) private offices, and a conference room.

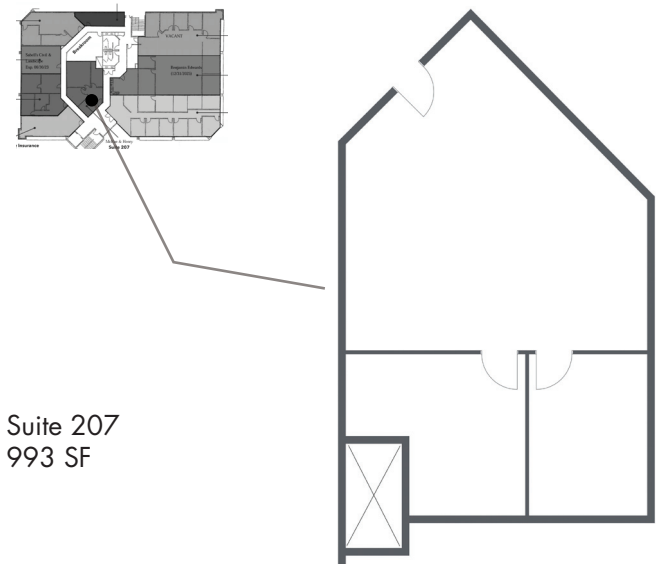
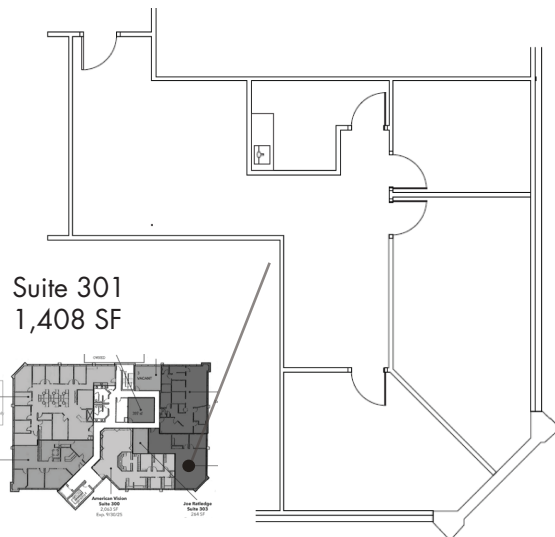
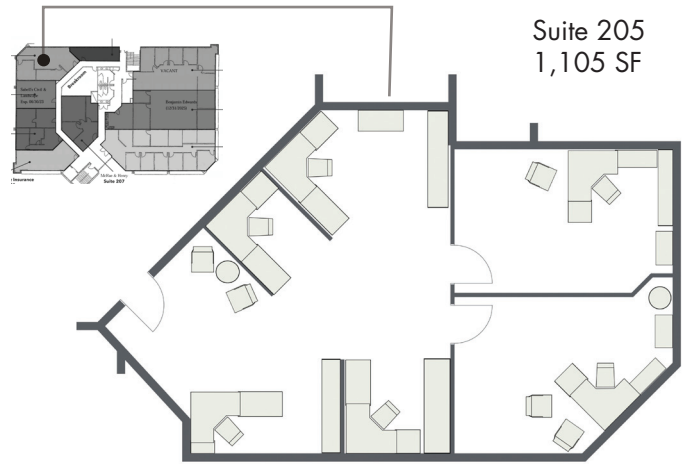
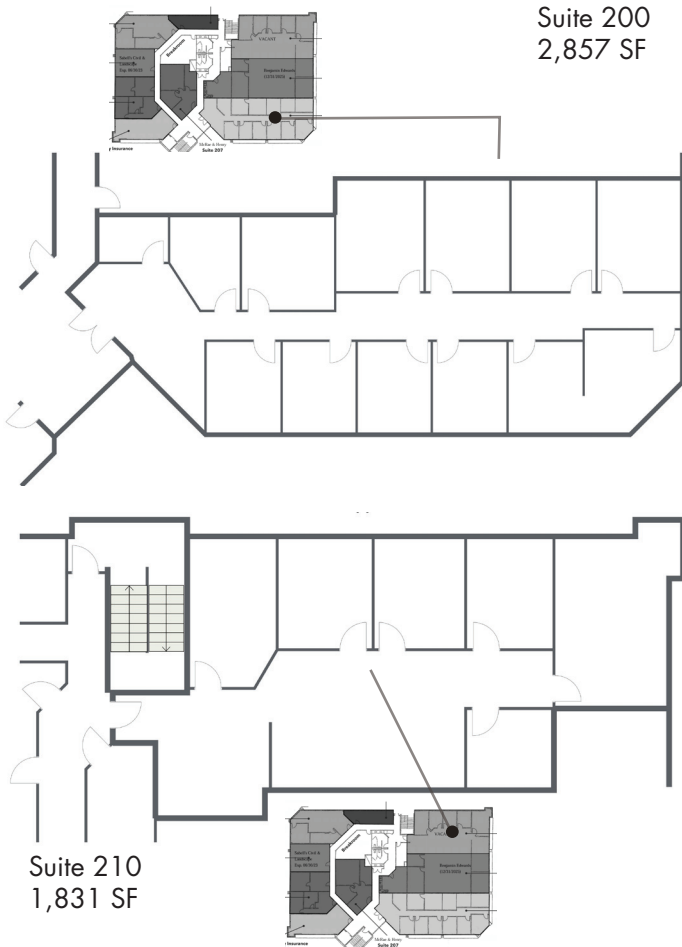
Quality general office suites located in the southwest metro Denver submarket. Available suites are 2nd & 3rd floor units with nice views. Lots of nearby retail and restaurant amenities, with Southwest Plaza located across Bowles Ave. Wells Fargo Bank is on-site in the building lobby. Located just west of the Wadsworth Blvd./W. Bowles Ave. intersection.

 **Fuller Real Estate**  
(303) 534-4822

**Brokerage  
Disclosure**

**John Becker**  
(720) 287-5414 direct  
(303) 888-7909 mobile  
JBecker@FullerRE.com

**Mike Haley**  
(720) 287-5408 direct  
(720) 309-3413 mobile  
MHaley@FullerRE.com



Floorplans provided as a visual reference and may not be 100% accurate.

