

LITTLETON OFFICE SPACE FOR LEASE

8500 W. Bowles Ave., Littleton, CO 80123



www.FullerRE.com



Brokerage Disclosure

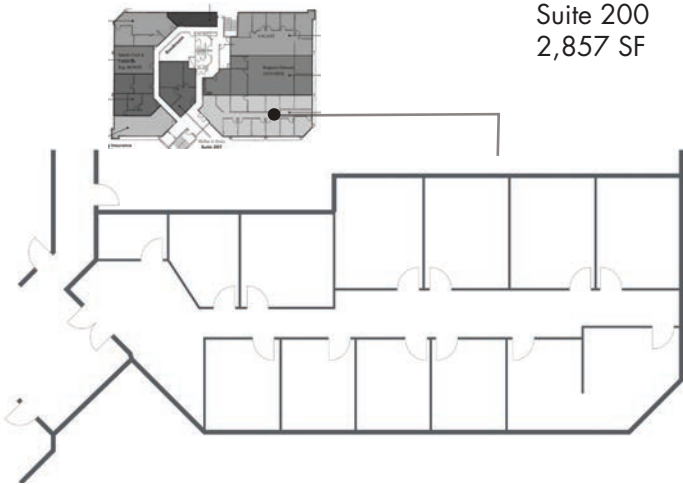
LEASE RATE: \$19.50/SF FSG

CURRENT AVAILABILITY

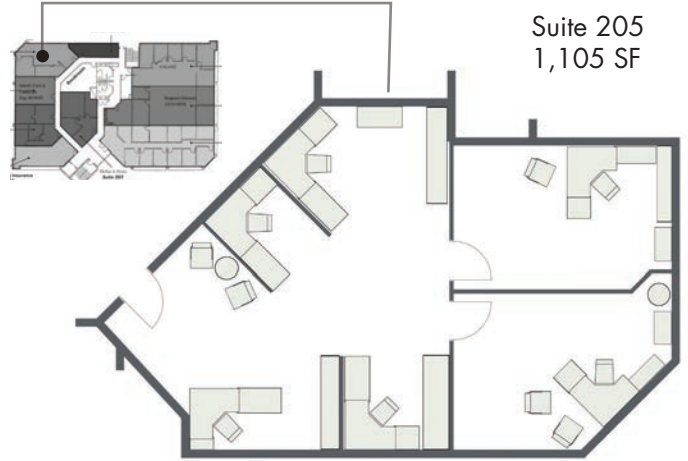
SUITE 200	
Size:	2,857± SF
Layout:	Nine (9) private offices, conference room, galley and reception area.
SUITE 205	
Size:	1,105± SF
Layout:	Two (2) private offices, open area for cubicles, reception area.
SUITE 207	
Size:	993± SF
Layout:	Two (2) private offices, large reception & cubical area
SUITE 210	
Size:	1,831± SF
Layout:	Five (5) private offices, and a conference room.

SUITE 301	
Size:	1,408± SF
Layout:	Three (3) perimeter offices, reception, and galley
SUITE 307	
Size:	398± SF
Layout:	One (1) open window office.

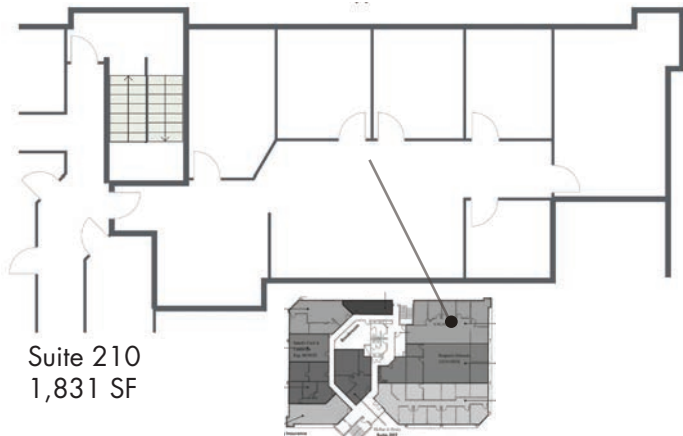
Quality general office suites located in the southwest metro Denver submarket. Available suites are 2nd & 3rd floor units with nice views. Lots of nearby retail and restaurant amenities, with Southwest Plaza located across Bowles Ave. Wells Fargo Bank is on-site in the building lobby. Located just west of the Wadsworth Blvd./W. Bowles Ave. intersection.



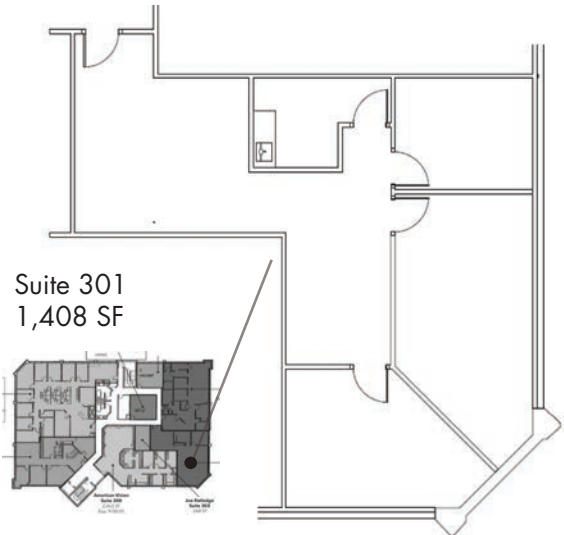
Suite 200
2,857 SF



Suite 205
1,105 SF

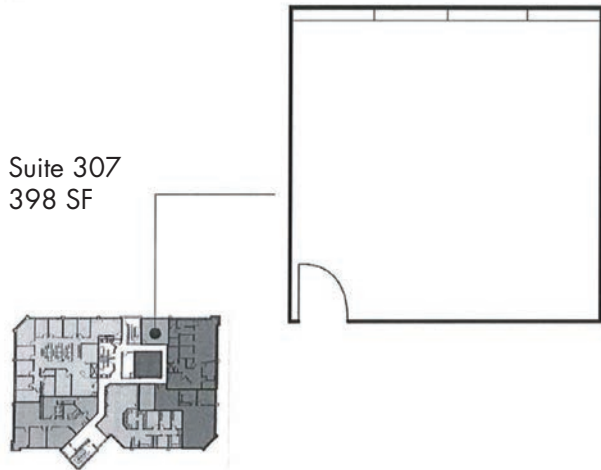


Suite 210
1,831 SF

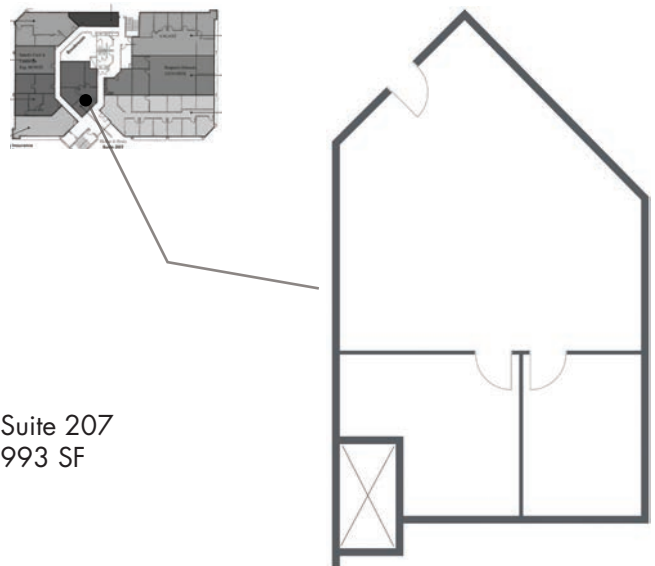


Suite 301
1,408 SF

Floorplans provided as a visual reference and may not be 100% accurate.



Suite 307
398 SF



Suite 207
993 SF

