

Littleton Office Space For Lease

8500 W. Bowles Ave., Littleton, CO 80123

FULLER
REAL ESTATE

www.FullerRE.com



For Lease: From \$19.50/SqFt/yr FSG

CURRENT AVAILABILITY

Suite 210

Size: 1,831 ± SF
Layout: Five (5) private offices, and a conf. room.
Possible 4,163 SF contiguous with Suite 212.

Suite 303

Size: 264 ± SF
Layout: Rectangle interior unit.
Available: May 2026
Lease Rate: \$500/month

Suite 305

Size: 1,996 ± SF
Layout: Two (2) dental operatories with four perimeter offices.

Suite 212 - Available March 2026

Size: 2,332 ± SF
Layout: Three (3) window and two (2) interior offices. Conf room, galley, and reception.
Possible 4,163 SF contiguous with Suite 210.

PROPERTY SUMMARY

Quality general office suites located in the southwest metro Denver submarket. Available suites are 2nd & 3rd floor units with nice views. Lots of nearby retail and restaurant amenities, with Southwest Plaza located across Bowles Ave. Wells Fargo Bank is on-site in the building lobby. Located just west of the Wadsworth Blvd./W. Bowles Ave. intersection. Parking - 4.2:1,000.

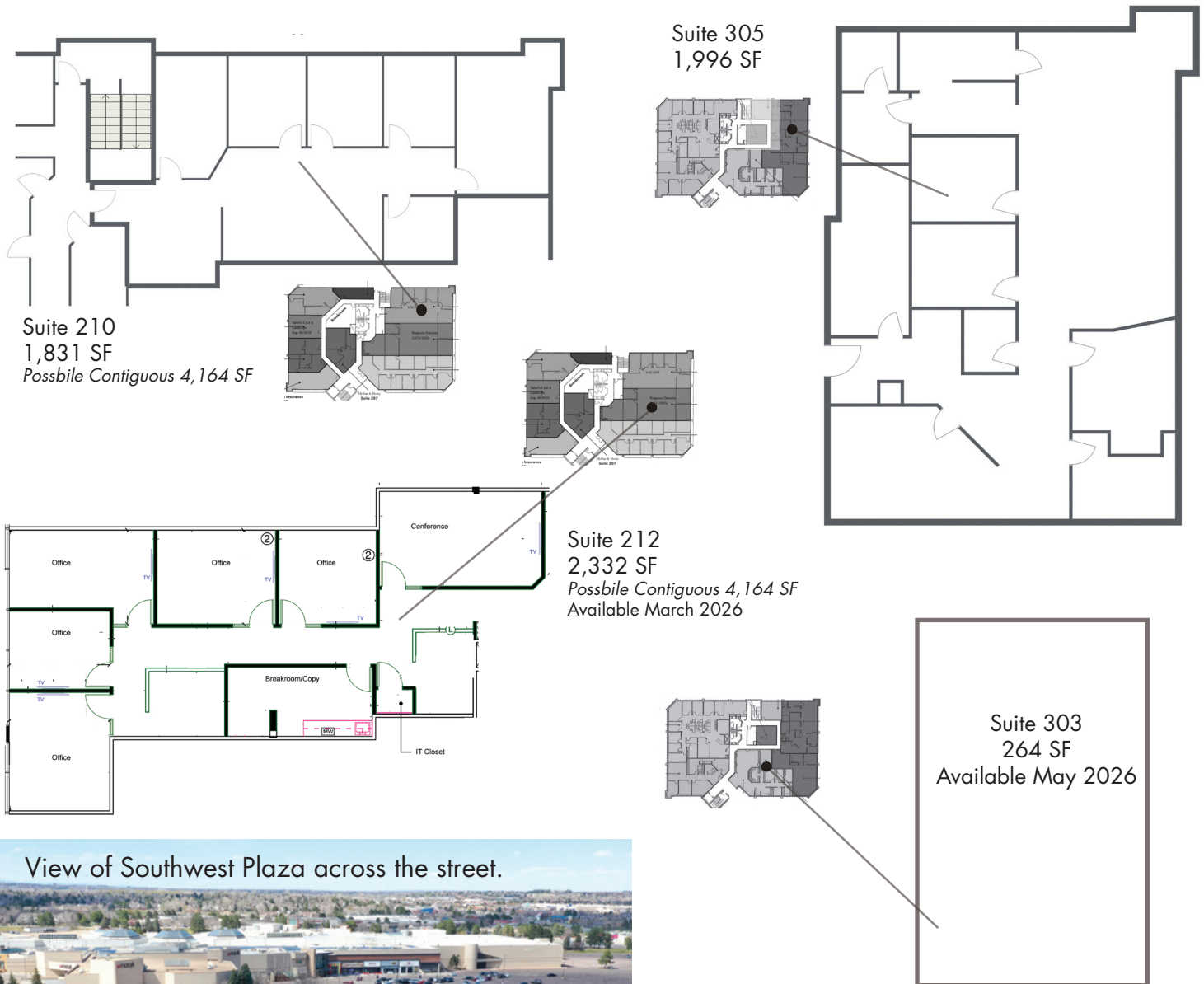
Fuller Real Estate
(303) 534-4822

**Brokerage Disclosure
to Buyer**

John Becker
(720) 287-5414 direct
(303) 888-7909 mobile
JBecker@FullerRE.com

Mike Haley
(720) 287-5408 direct
(720) 309-3413 mobile
MHaley@FullerRE.com

Floorplans provided as a visual reference only.



View of Southwest Plaza across the street.

