

Lakewood Office Space For Lease

363 S. Harlan St., Lakewood, CO 80226



BUILDING OVERVIEW

PROPERTY SUMMARY

363 Building: 25,085± SF
Parking: 3.7:1000 ratio
Lease Rate: \$14.00/SF MG

Located just south of Alameda Ave. about halfway between Sheridan & Wadsworth, is the Belmar East office building. Offering updated finishes, a responsive landlord, property manager, abundant parking, and affordable lease rates. Numerous nearby retail and restaurant amenities.

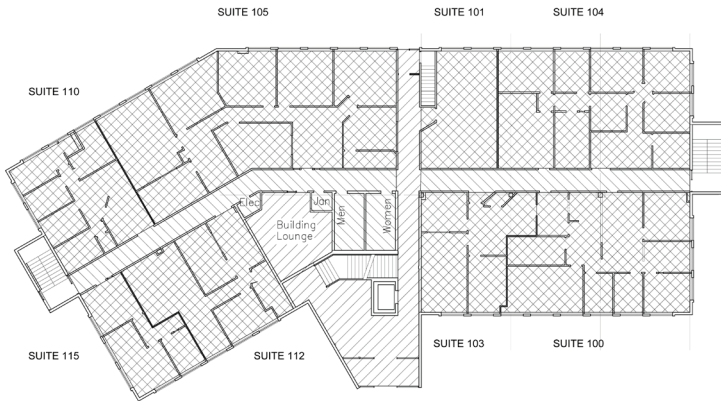
**Brokerage Disclosure
to Buyer**

Fuller Real Estate
(303) 534-4822

Alex Scott
(720) 287-5417 direct
(972) 207-8877 mobile
AScott@FullerRE.com

Travis Wanger
(720) 974-2790 direct
(303) 888-1061 mobile
TWanger@FullerRE.com

Hayley Konowalchuk
(720) 974-2792 direct
(619) 742-5525 mobile
HKono@FullerRE.com



Availability:

Suite 100:	2,004 RSF	Leased
Suite 103:	1,116 RSF	Leased
Suite 104:	2,185 RSF	Leased
Suite 105:	3,294 RSF	Leased
Suite 110:	1,152 RSF	Leased
Suite 112:	1,348 RSF	Leased
Suite 115:	692 RSF	Leased
Suite 200:	8,775 RSF	Leased
Suite 203:	741 RSF	Leased
Suite 205:	1,865 RSF	Leased
Suite 260:	1,231 RSF	Leased
Suite 280:	803 RSF	Leased

