

LAND OFFICE INDUSTRIAL RETAIL INVESTMENTS

WESTERRA CREDIT UNION FOR LEASE

8906 W. Bowles Ave., Littleton, CO 80123



www.FullerRE.com



OFFICE SPACE FOR LEASE

For Lease:	\$18.50/SF Full Service Gross	Building:	14,549± SF
Available:	1,843 SF, Quality suite with lobby identity, six perimeter offices, conference room, and galley kitchen.	YOC:	1985
Suite 110 -		Parking Ratio:	4.5:1000
		Parking:	65 Spaces

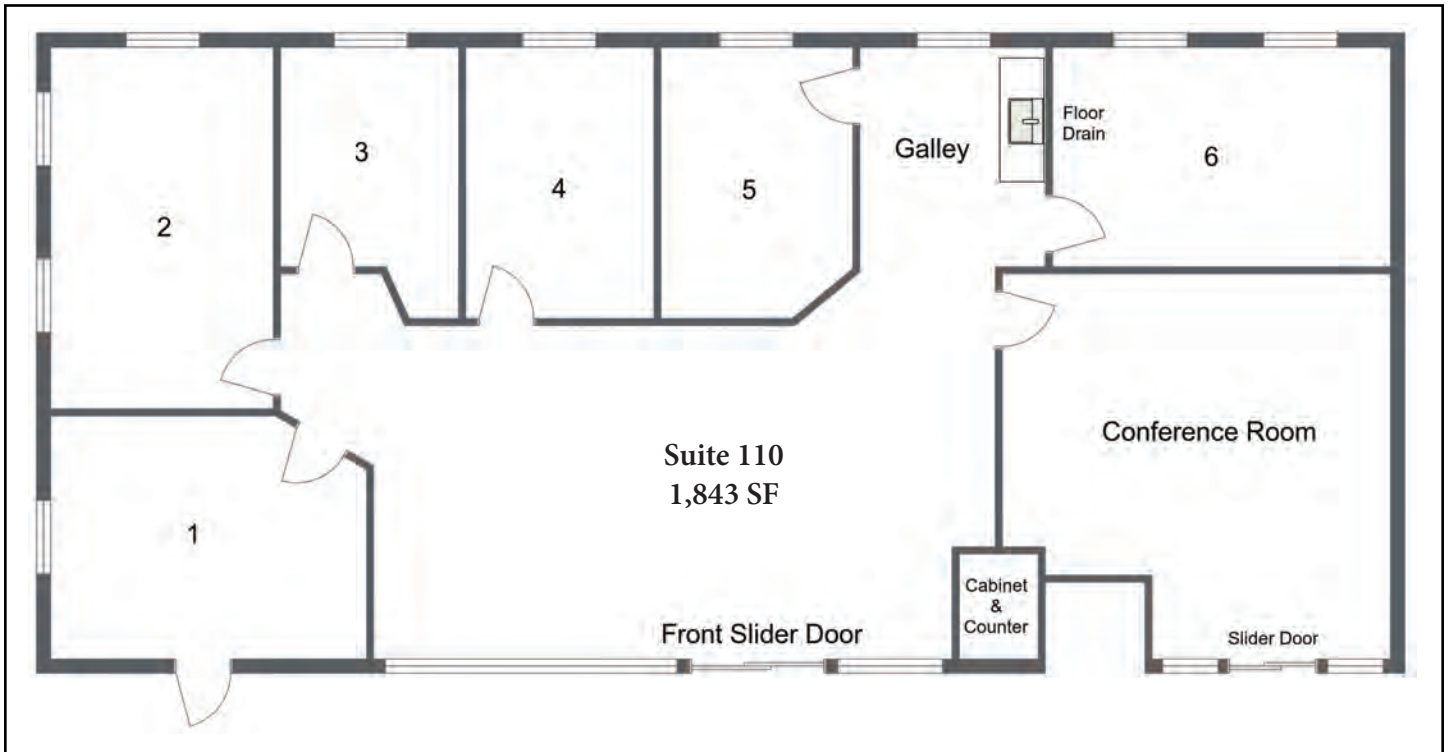
- ◆ Attractive building across from Southwest Plaza Mall
- ◆ Exceptional access to Kipling, C-470 and southwest Littleton
- ◆ Abundant nearby retail and restaurant amenities
- ◆ On the RTD bus line
- ◆ Tenant responsible for in-suite janitorial.

Fuller Real Estate
(303) 534-4822

[Click for
Brokerage
Disclosure](#)

John Becker
(720) 287-5414 direct
(303) 888-7909 mobile
JBecker@FullerRE.com

Mike Haley
(720) 287-5408 direct
(720) 309-3413 mobile
MHaley@FullerRE.com



Floorplans provided as a visual reference only and may not be completely accurate.

The information in this brochure was provided to Fuller Real Estate (FRE) by the owner of the property. FRE has not independently verified this information. Buyers have been advised by FRE to investigate the property including, without limitation, the physical condition of the property, access, availability of utility services, zoning, environmental risks, and soil conditions.